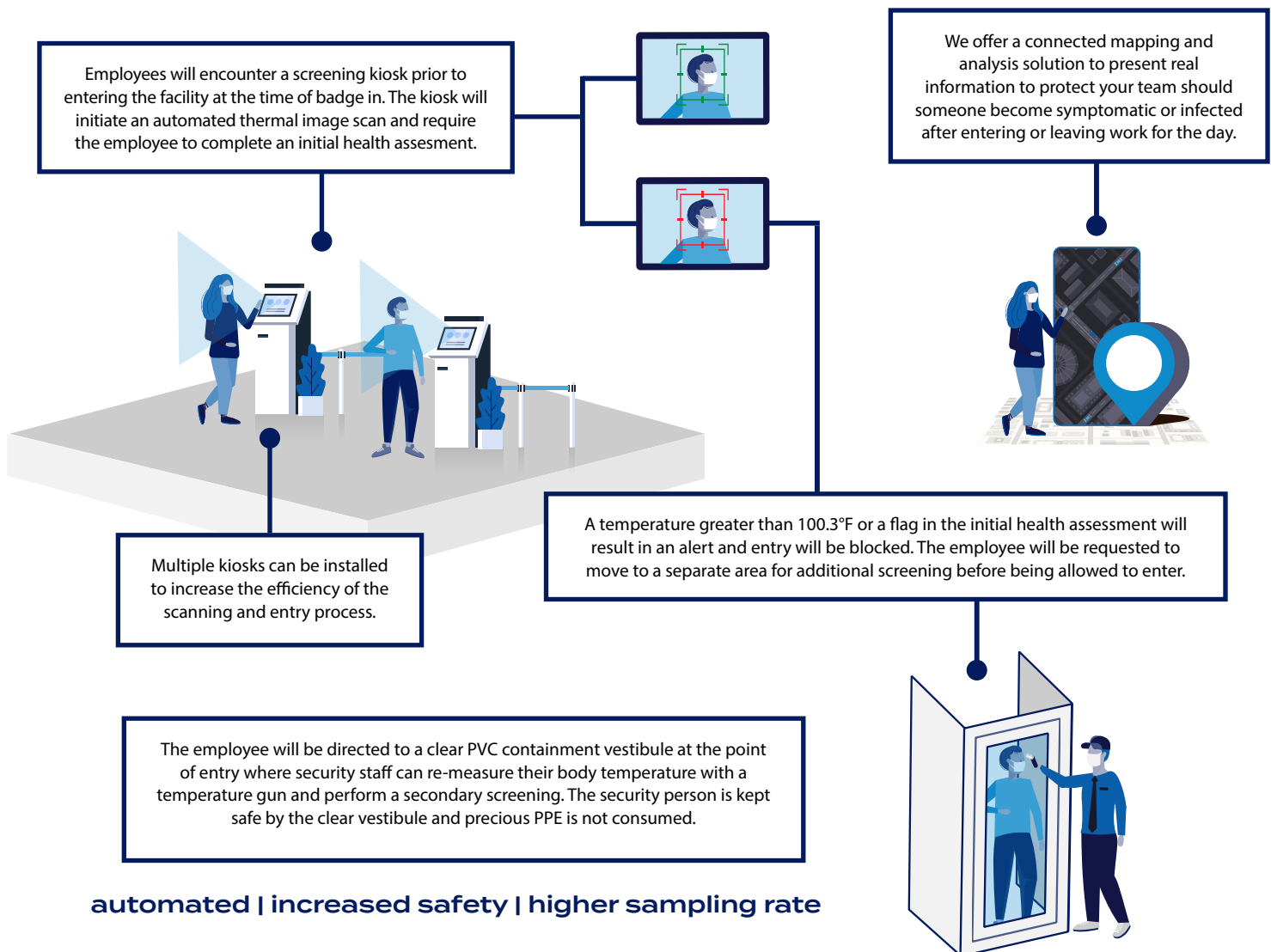


COVID-19 and the global pandemic have caused disruptions to business disruption and to everyone's life. Though a viral infection can not be predicted or stopped, we have learned that controlling the spread rate is key to survival.

At Patrick, we believe in taking a cue from our immune system to help keep our people safe and to reduce the spread of COVID-19, as well as other diseases and infections that can affect people. The technology we have selected is a thermal imaging scan technology and screening coupled with our current facility entry security technology.

## how it works



To avoid HIPPA concerns, the thermal image scan triggers a "latching relay" response to allow entry in conjunction with the security badge scan already in place. The thermal image and body temperature is not attached to the person's identity. The information is not saved and therefore cannot be disseminated beyond the go/no-go entry decision at the badging location.

# application fields

---

This thermal imaging scan technology combined with our current facility entry security technology is designed to deliver results quickly and help keep your business moving. Some of the common application fields are shown below, but this technology can be installed where you need it, when you need it.

## industrial plants



## manufacturing facilities



## intermodal facilities



## construction sites



## campuses



## commercial buildings



# assessment + implementation strategy

---

Our experts will smoothly integrate this solution as a subsystem to your existing security system, ensuring compatibility and functionality. All installations can be permanent or mobile to fit the needs of your business. From assessment to installation, our turnkey process will help you quickly get back to business... safely.

# beyond COVID-19

---

Is this a system that will become useless after COVID-19? We don't feel it that is the case. The CDC has published data that businesses incur an annual cost impact of \$225.8 billion due to illness absenteeism. Keeping our people healthy and safe has an easily measurable ROI for our business and for yours. Keep in mind, this CDC cost number does not include events such as the COVID-19 economic impact to our businesses.

# contact us

---

Please contact us to learn more about this solution and our ability to rapidly deploy this solution at your facility.

## Brian Walsh

Director of Strategy + Business Development  
P 630.795.7432 | C 630.310.4947  
bwalsh@patrickco.com  
www.patrickco.com